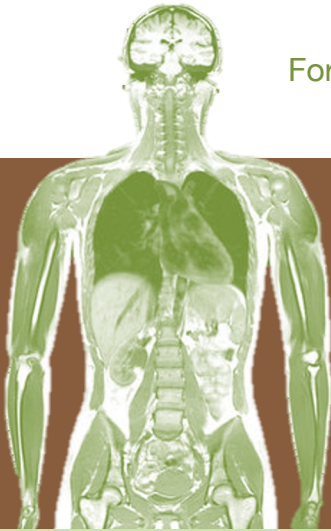




eden Learning

For all Diagnostic Training – Specialists in MRI/CT



Introduction to MRI

5 -6 March 2024

Online

12-13 November 2024

Online

Overview

This two-day course is designed for people new to MRI or for those who would like a basic refresher. It is an entry level course introducing basic MRI physics, equipment and MRI Safety. Clinical radiographers will deliver interactive sessions and discuss clinical applications, technique, top tips and will share interesting cases.

Course Content *Topics to include:*

- ✧ MRI Equipment
- ✧ MRI Safety and Patient Management
- ✧ Basic Physics
- ✧ Introduction to Pulse Sequences
- ✧ Image Quality and basic image optimisation
- ✧ Image Artefacts, recognition and how to avoid
- ✧ CNS – Clinical indications, technique, anatomy and pathology
- ✧ MSK – Clinical indications, technique, anatomy and pathology

Price: Online £325 + VAT

Further information or to register:

E: denise@edenlearning.co.uk

T: 07842827087

Online: www.edenlearning.co.uk

Eden Learning reserves the right to alter the course content, venues and dates without prior notification